

## Course Outline

### Basics of GIS

Resource Person: Dr. Vandana M.,  
Geomorphologist

### Data Acquisition & Management

Resource Person: Dr. Suja R., Professor,  
Government Engineering College, Barton Hill

### Spatial Data & Spatial Analysis

Resource Person: Dr. Suraj R.,  
Senior Scientific Assistant, Kerala State Remote  
Sensing & Environment Centre (KSREC)

### Remote Sensing Basics

Resource Person: Dr. Tony Rajan Mathew,  
Senior Consultant,

Infrastructure Information Management, KIIFB

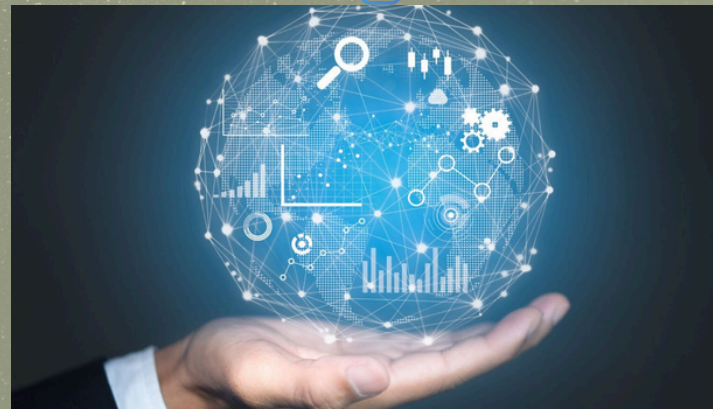


### Software Introduction & QGIS Software Training

Resource Person: Dr. Arathy, Assistant Professor,  
Government Engineering College, Barton Hill  
Applications of GIS

Resource Person: Ms. Anoja B.V.,  
Senior GIS Analyst, KIIFB

### Mini Project / Live Project Discussions



## ABOUT MBCET

Established in 2002, Mar Baselios College of Engineering and Technology (MBCET) in Thiruvananthapuram, Kerala, strives to provide quality technical education with a foundation in human values. Offering 7 undergraduate and 7 postgraduate engineering programs, MBCET is an approved research center of APJ Abdul Kalam Kerala Technological University. All B.Tech programs are accredited by NBA, and the institution holds an A grade (CGPA 3.13) from NAAC since 2016. Achieving "Autonomous" status from UGC in 2020 for a decade, MBCET, nestled on Bethany Hills, aims to inspire morally upright, socially committed, and intellectually trained engineers, emphasizing flexibility for academic excellence.

## DEPARTMENT OF CIVIL ENGINEERING

The Civil Engineering branch was started in Mar Baselios College of Engineering and Technology in 2005. The department currently offers an undergraduate programme in Civil Engineering leading to B.Tech degree and three graduate programmes in Structural Engineering, Transportation Engineering and Environmental Science and Engineering.

### VISION

To be a Centre of Excellence in Civil Engineering education with a global perspective, creating ethically strong engineers for the service of society.

### MISSION

To provide Engineering Education which can create exemplary professional Civil Engineers of high ethics with strong conceptual foundation coupled with practical insight, to serve the industry and community.

## Bank Details For Registration

Account name: CE DEPT, MBCET

Account no. : 0483053000017173

IFSC : SIBL0000483

Branch : SIB Nalanchira

## Registration Fees

Industrialists/ Government Delegates, etc. – ₹1500/-

Faculties, Academicians - ₹1000/-

PhD Scholars – ₹750/-

UG/PG Students - ₹500/-

Online Participants - ₹750/-

Registration Link : <https://forms.gle/iWvzbCtQH44KMean6>

E-Certificate will be provided to all participants

**VENUE: CIVIL ENGG. DEPARTMENT**

**LAST DATE OF REGISTRATION :**

16th May 2026.



**SCAN THE QR CODE TO REGISTER**

Coordinators of FDP:

Ms. Diana Alice Sugunan, Asst. Professor, CED, MBCET

Ph: (+91) 9495882991

Ms. Sangeetha Sajeev, Asst. Professor, CED, MBCET

Ph: (+91) 8921587881



**MAR BASELIOS**  
COLLEGE OF ENGINEERING AND TECHNOLOGY  
AUTONOMOUS

## Faculty Development Programme on Empowering Civil Engineering with GIS and Spatial Intelligence

May 18 – 23, 2026, 9 : 30 am to 4 : 30 pm



Mar Baselios College of Engineering and Technology (Autonomous),  
Thiruvananthapuram

Department of Civil Engineering, MBCET  
in association with  
Environmental and Water Resources Engineering  
Research Group



## Programme Highlights

- Hands-on GIS & Remote Sensing training
- Real-world data applications
- Software exposure (QGIS, Google Earth Engine)
- Mini project with live datasets

## Objective

This FDP aims to introduce the fundamentals of Geographic Information Systems, develop skills in spatial data handling and analysis, and provide hands-on training in QGIS along with the integration of Remote Sensing for Civil Engineering applications.

## Outcomes

By the end of this programme, participants will be able to apply GIS techniques, perform spatial analysis and mapping using QGIS, and utilize geospatial data to solve civil engineering problems and complete basic GIS-based projects.

“When future is mapped with GIS, smarter decisions begins”